

PORTALS **to** LITERATURE

THE ADVENTURES OF HUCKLEBERRY FINN

MARK TWAIN

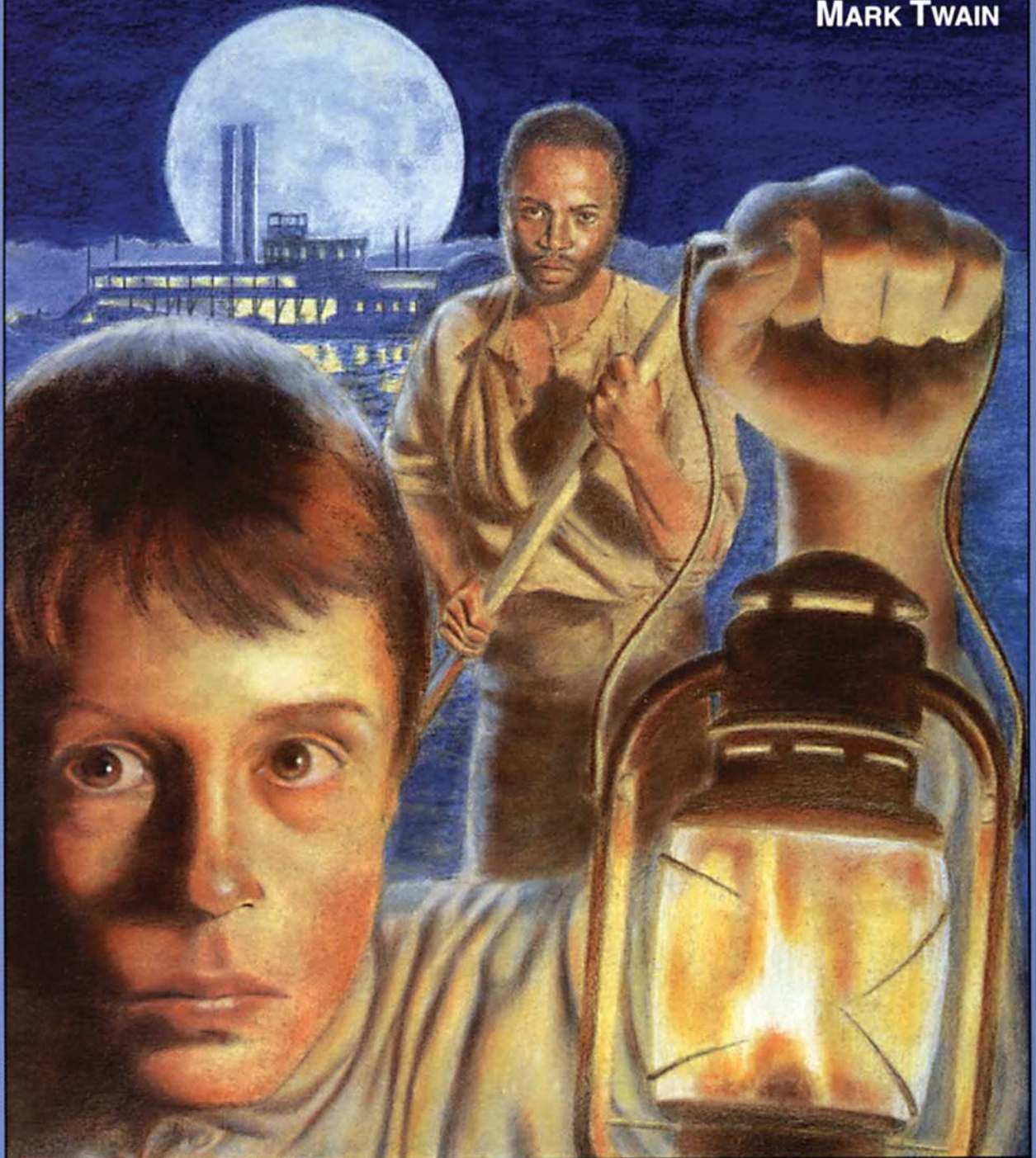


Table of Contents

Welcome to *Portals to Literature* 1
About the Author 4
The Author and His Work 6

Chapters 1–7

Teacher Notes 8
Check for Understanding: Choosing the Best Response 11
Vocabulary Building: Context Clues 12
Literary Skills
 Point of View: In the First Person 13
 Dialect: In Their Own Words 17

Chapters 8–13

Teacher Notes 19
Check for Understanding: Deciding True or False 22
Vocabulary Building: Defining Options 24
Literary Skills
 Setting: On the Frontier 25
 Figurative Language: The Truth, in a Manner of Speaking 28

Chapters 14–18

Teacher Notes 30
Check for Understanding: Determining Sequence of Events 33
Vocabulary Building: Vocabulary Analogies 34
Literary Skills
 Character Relationships: Huck and Jim 35
 Irony: That's Not Logical 38

Chapters 19–22

Teacher Notes 41
Check for Understanding: Completing Sentences 43
Vocabulary Building: Vocabulary Acrostic 44
Literary Skills
 Setting and Mood: The River and Its Banks 45
 Theme: The Point Is 50

Chapters 23–27

Teacher Notes 52
Check for Understanding: Matching Characters and Actions 55
Vocabulary Building: Finding the Right Meaning 56
Literary Skills
 Characterization: Based on Evidence 58
 Humor: Comic Relief 62



Check for Understanding

Chapters 1–7

■ Choosing the Best Response

Directions

Test your understanding of what you read by completing the statements below. Write the letter of the best response on the blank.

- _____ 1. Huck doesn't like living with the Widow Douglas because a. her sister owns a slave; b. she is too civilized; c. she has a mean temper.
- _____ 2. Huck agrees to come back to live with the widow a. to escape pap; b. to get the interest on his money; c. to make the widow happy.
- _____ 3. Tom wants to play a trick on Jim a. because he doesn't like Jim; b. just for fun; c. because Jim has played many tricks on the boys.
- _____ 4. Tom Sawyer forms a band to a. rob people; b. track down criminals; c. rescue people in distress.
- _____ 5. Tom Sawyer's band attacks a. a stagecoach; b. another gang of boys; c. a Sunday school picnic.
- _____ 6. Huck Finn wants Judge Thatcher to take all of his money because Huck a. is afraid he will spend it; b. doesn't really feel he deserves the money; c. is afraid pap will get it.
- _____ 7. Pap is a. proud of Huck's ability to read; b. angry at the government; c. embarrassed that he is dirty and ragged.
- _____ 8. When pap catches Huck, pap a. forces Huck to give him the \$6,000; b. takes Huck to a nearby town; c. locks Huck in a cabin.
- _____ 9. Huck escapes from pap by a. staging his own murder; b. getting Tom to help him; c. stealing pap's gun.
- _____ 10. After escaping, Huck goes to a. the widow's house; b. Jackson's Island; c. the gang's cave.



Check for Understanding

Chapters 1–7

■ Choosing the Best Response

Directions

Test your understanding of what you read by completing the statements below. Write the letter of the best response on the blank.

- _____ 1. Huck doesn't like living with the Widow Douglas because a. her sister owns a slave; b. she is too civilized; c. she has a mean temper.
- _____ 2. Huck agrees to come back to live with the widow a. to escape pap; b. to get the interest on his money; c. to make the widow happy.
- _____ 3. Tom wants to play a trick on Jim a. because he doesn't like Jim; b. just for fun; c. because Jim has played many tricks on the boys.
- _____ 4. Tom Sawyer forms a band to a. rob people; b. track down criminals; c. rescue people in distress.
- _____ 5. Tom Sawyer's band attacks a. a stagecoach; b. another gang of boys; c. a Sunday school picnic.
- _____ 6. Huck Finn wants Judge Thatcher to take all of his money because Huck a. is afraid he will spend it; b. doesn't really feel he deserves the money; c. is afraid pap will get it.
- _____ 7. Pap is a. proud of Huck's ability to read; b. angry at the government; c. embarrassed that he is dirty and ragged.
- _____ 8. When pap catches Huck, pap a. forces Huck to give him the \$6,000; b. takes Huck to a nearby town; c. locks Huck in a cabin.
- _____ 9. Huck escapes from pap by a. staging his own murder; b. getting Tom to help him; c. stealing pap's gun.
- _____ 10. After escaping, Huck goes to a. the widow's house; b. Jackson's Island; c. the gang's cave.



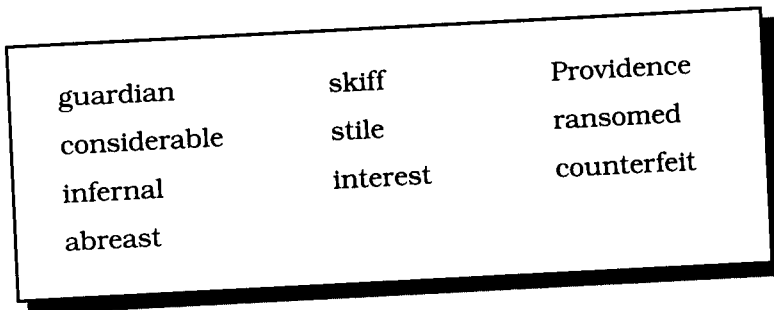
Vocabulary Building

Chapters 1–7

■ Context Clues

Directions

Choose a word from the vocabulary list in the box to correctly complete each sentence. Write the correct word on the blank.



1. Huck leaves the widow's house and climbs over the _____ to get from the garden to the road.
2. Tom doesn't care if the money is real or _____ as long as he can have an adventure stealing it.
3. If the widow becomes Huck's _____, she will be legally responsible for him.
4. Huck and Tom each have a _____ amount of money.
5. Tom says that any captives would have to be kept in the cave until they were _____.
6. Huck rows the _____ up the river to look for floating logs.
7. When the canoe is almost _____ of Huck, he can see pap in it.
8. In pap's opinion, the government, the judge, the widow, and the free black professor are all _____.
9. According to Miss Watson, _____ will answer the prayers of those who asked for spiritual gifts.
10. The judge invested Huck's money so that it would earn _____.



■ In the First Person

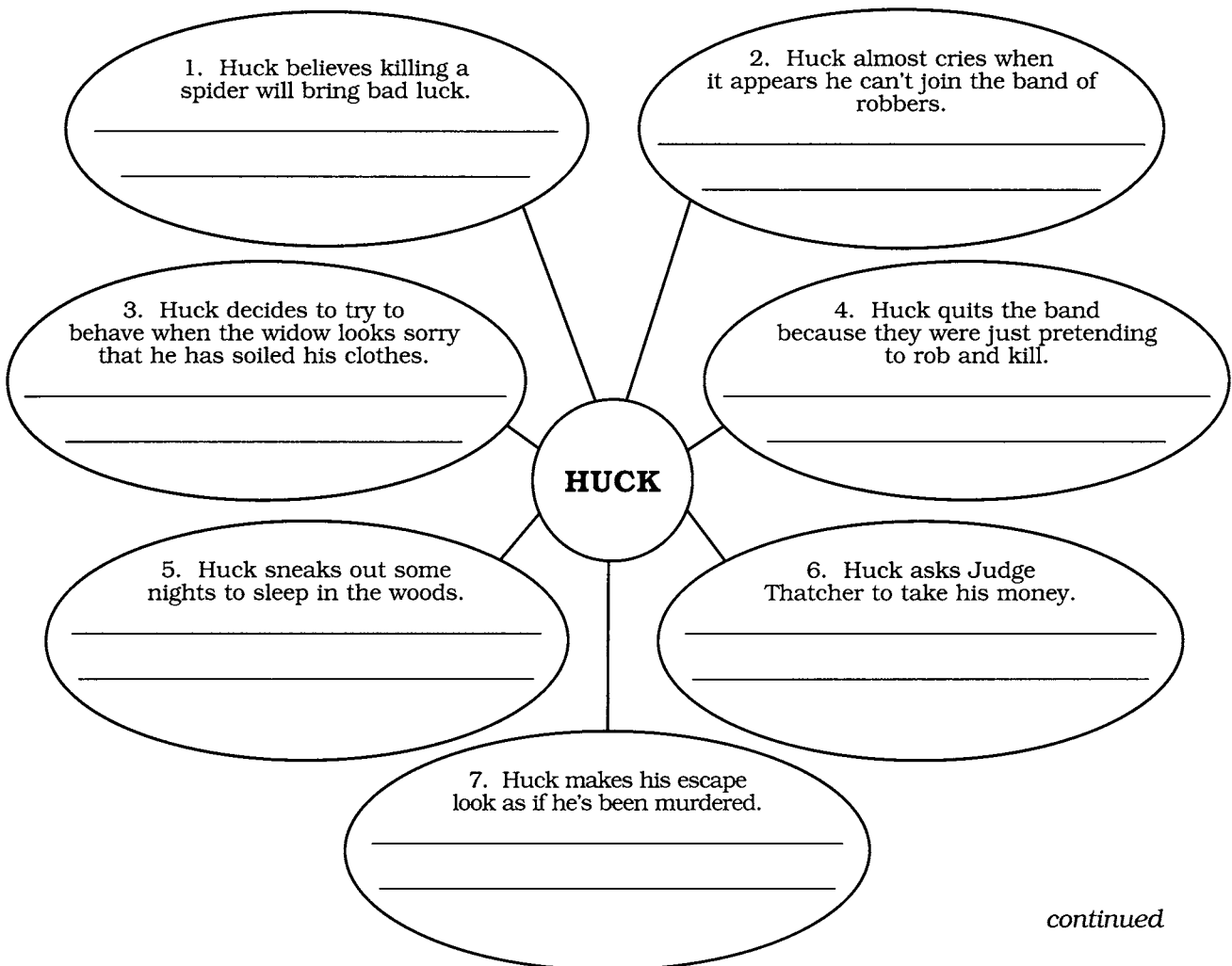
Point of view is the voice a writer uses to present a story. In *The Adventures of Huckleberry Finn*, the story is told by Huck himself. When a story is told by a character in his or her own words, the author is using *first person point of view*.

Using first person point of view limits an author because the thoughts and observations of only one character (in this case, Huck) can be introduced. Because of this, readers are sometimes overly influenced by the narrator. Therefore, in order for readers to form their own opinions about events and people in a novel, they must decide what kind of person the narrator is. In *The Adventures of Huckleberry Finn*, readers get to know Huck through his words, actions, thoughts, and other characters' reactions to him.

Directions

Following are two concept webs with "Huck" in the center of each.

The circles of the web below contain actions and thoughts of Huck. In each circle, tell what the thoughts and actions reveal about Huck.



continued

Literary Skills: Point of View

In the First Person

Chapters 1–7

■ One Step Further

What kind of person is Huck Finn? To answer this question, think about Huck's own words and actions, what others think of him, and what you have observed of him so far. Then circle your response to each statement below. A 1 indicates complete agreement with the statement, and a 5 indicates complete disagreement with the statement. Give your reasons for each response. There are no right or wrong answers. Any supported opinion is acceptable.

1. Huck is a good friend.

1 2 3 4 5

Reason: _____

2. Huck is greedy.

1 2 3 4 5

Reason: _____

3. Huck is smart.

1 2 3 4 5

Reason: _____

4. Huck is inconsiderate of other people's feelings.

1 2 3 4 5

Reason: _____

5. Huck thinks he is important.

1 2 3 4 5

Reason: _____

continued



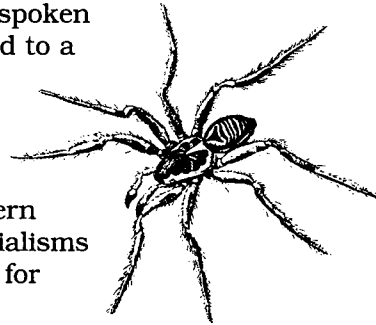
■ In Their Own Words

The characters in *The Adventures of Huckleberry Finn* speak a dialect of speech patterns that are characteristic of a certain region or area. Usually an author has characters speak in dialect in order to portray them more realistically and to draw readers into their world.

One of the most interesting characteristics of dialects is *colloquialisms*, colorful words or expressions used mainly in spoken language. For example, Huck refers to lies as “stretchers” and to a yawn as a “gap.”

Directions

Each sentence below contains a colloquialism in italics from the novel. On the line below each sentence, give a modern English equivalent for the colloquialism. Some of the colloquialisms are in the dictionary. You may have to guess at the meaning for others.



1. Huck says the spider that got burned in his candle will *fetch* him some bad luck.

2. Huck and Tom *scrouched* down so Jim wouldn't see them. _____

3. Huck says people usually start to itch when they are at a funeral or with the *quality*. _____

4. If another slave was talking about witches, all Jim had to say to *cork him up* was, “What do you know about witches?” _____

5. One of the gang asked Tom what he *reckoned* the word ransom meant.

6. Pap complains that Huck is wearing *starchy* clothes.

continued



Literary Skills

Chapters 8–13 *Figurative Language*

■ The Truth, in a Manner of Speaking

To make their writing more colorful and interesting, authors often use *figurative language*. *Figurative language* creates pictures within the reader’s mind. In this section of *The Adventures of Huckleberry Finn*, Mark Twain uses three kinds of figurative language: similes, metaphors, and hyperbole.

Similes use the words “as,” “as if,” or “like” to make a comparison. “The children stood stock still, like statues in a museum” is an example of a simile.

A *metaphor*, on the other hand, does not use “as,” “as if,” or “like.” “Suddenly she erupted in anger, tossing bitter accusations into the quiet room” is an example of a metaphor. The words “erupted” and “tossing” suggest a comparison between a person’s anger and an erupting volcano.

Hyperbole is deliberate and extreme exaggeration. Hyperbole is often used to stress a point or to be humorous. An example of hyperbole is “By the time Alf finishes that story, his beard will be three inches longer.” The exaggeration is making the point that Alf is a long-winded storyteller.

Directions

For each example below, decide which type of figurative language is being used. On the line at the left, write H for hyperbole, S for simile, or M for metaphor. For each metaphor and simile, write what two things are being compared.

- _____ 1. When Huck found the smoking campfire, his heart jumped up amongst his lungs.

- _____ 2. In a while, darkness began to blanket the river.

- _____ 3. Jim says a body that is planted is less likely to haunt the living.

- _____ 4. Huck says he and Jim didn’t try to land the two-hundred-pound catfish because it would have flung them into Illinois.

- _____ 5. The cottonwood trees along the bank of the river were as thick as harrow teeth (farm equipment with sharp spikes).

continued